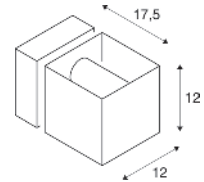
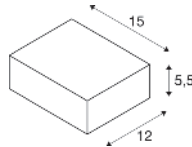
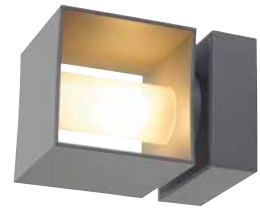




QUADRASYL WL, TCR-TSE

SQUARE TURN WL, G9



220-240 V ~50/60 Hz
Material: Aluminium/Glas



220-240 V ~50/60 Hz
Material: Aluminium/Glas



Socket: 1xGX53 max. Ø: 7,5 cm | L: 2,7 cm



Socket: 1xG9 max. Ø: 3,5 cm | L: 8 cm

Variante	Art.Nr.	EUR
● anthrazit	232285	64,00

Variante	Art.Nr.	EUR
● grau	1000335	209,00



GX53 | 6W | 120°
490 lm | 2700 K | EEK = G
7 kW/1000h



Art.Nr.: 1005272 11,50 EUR



G9 | 4W | 300°
400 lm | 3000 K | EEK = E
4 kW/1000h

Art.Nr.: 1005286 8,80 EUR

1000335 935

