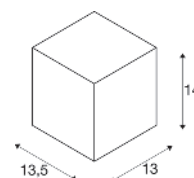
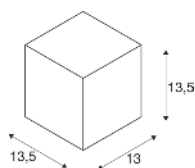
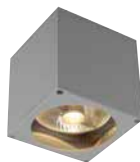




BIG THEO WL, QPAR111

BIG THEO WL



220-240 V ~50/60 Hz
Material: Aluminium/Glas



100-277 V ~50/60 Hz | 500 mA
Systemleistung: 21 W
Material: Aluminium/Glas



Socket: 1xGU10



2000lm|3000 K

Variante	Art.Nr.	EUR
● anthrazit	229565	113,00
● grau	229564	113,00

Variante	Art.Nr.	EUR
● anthrazit	234525	224,00



GU10 | 13 W | 12°
650 lm | 3000 K | EEK = F
13 kW/1000h



Art.Nr.: 1005278 55,00 EUR



234525 865